

## Item Type 68, Conditional items and making a “To-do List”

Often, it is handy to treat all cows in a pen (even when they are getting different treatments) before moving on to the next pen. For example, you might want to administer J5 and Bovashield shots by pen rather than all the J5 shots across the herd, then all the Bovashield shots across the herd. Using a special Dairy Comp item we can make this multifunctional work list.

To get the right cows to show up for the appropriate shot, by pen, follow the directions outlined below.

### Summary of Steps:

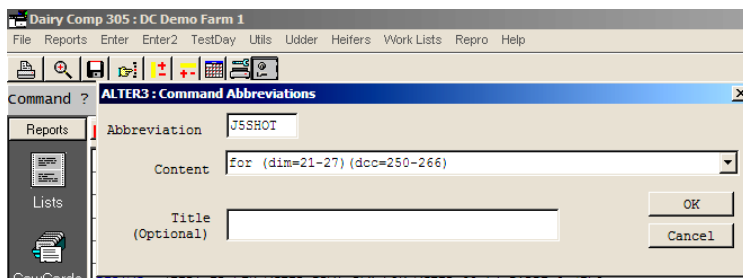
1. Make the commands using only the FOR statements of the shot or drug to be administered.
2. Make the Item type 68
3. Develop the work list using the item you made in the previous step.

### 1. Determine the constraints for the shots.

On the example below, J5 goes to animals at 21-27 DIM and 250-266 DCC.

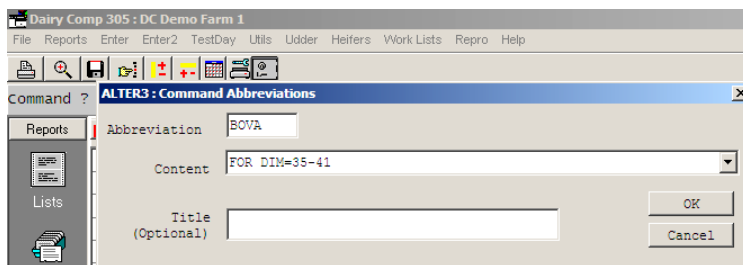
Alter > Commands > Add a command

The content line only contains the FOR statement for J5 shots



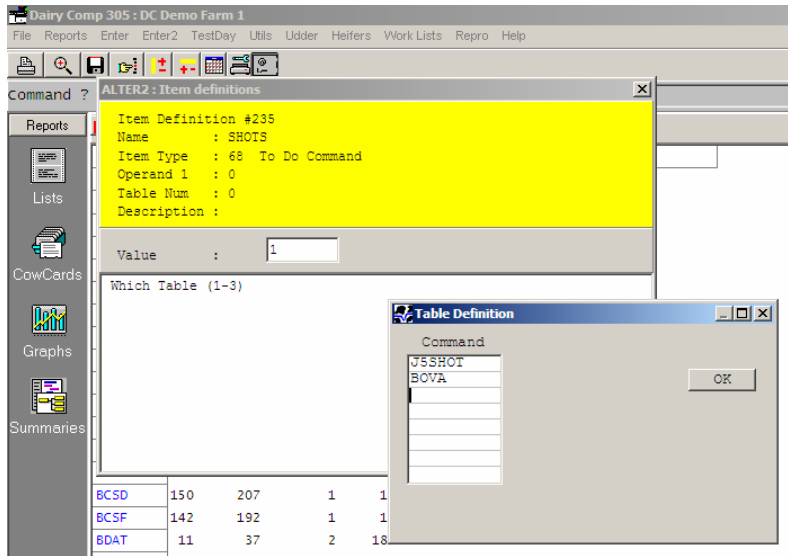
Let's assume Bovashield only goes to cows 34-41 DIM.

Alter > Commands > Add a command



### 2. Make the item using type 68

Alter > items > add an item. When prompted for the item type, select #68. When prompted for the commands, put in the commands you made in step #1.



Now, make a work list using the “SHOT” item.  
 In the “FOR statement” include SHOT <> “-“ to get only cows eligible for shots.

